

Sergei Rachmaninoff
Symphony No. 1 in D Minor, Op. 13

Corno II in F I

Grave

fff

rit Allegro ma non troppo

pp

15 rit 1 atempo 2 1 1 Cor. I mf

2 1 mf

Cor. III. IV pp 1

2

pp cresc. poco a poco f

2

Rachmaninoff — Symphony No. 1

- 2 -

Più vivo

ff

7 3

pp

rit. Moderato

10 3 1

2 3 2 3 rit. 1

Meno mosso Moderato

2

ff

1

f mf dim.

1 rit. a tempo 2 Allegro vivace 10

4 6 Ob. Cor. I 5

P

ff

1

2

ff

mf

Rachmaninoff — Symphony No. 1

- 3 -

6 8

dim.

7

4 8 3

ff Maestoso

9

fff

10

Allegro vivace

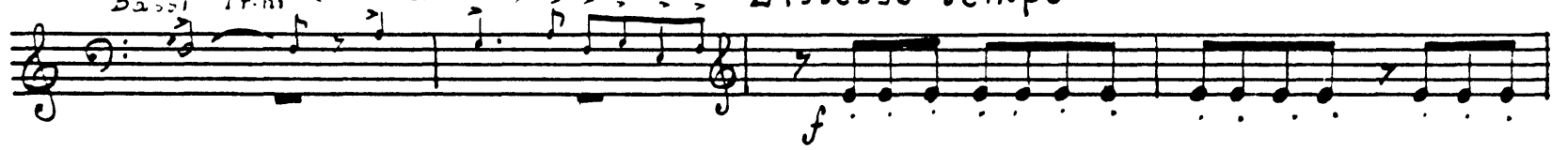
9

Rachmaninoff — Symphony No. 1

- 4 -

Bassi Trini (senza rit.)

L'istesso tempo



Meno mosso

13

7/4 4/4

f *f*

rit.

Moderato

4/4 4/4

mf *mf*

Allegro molto

4/4 4/4

ff *ff*

4/4 4/4

ff *ff*

4/4 4/4

ff *ff*

Più vivo

14

4/4 4/4

mf *mf*

4/4 4/4

mf *mf*

15

4/4 4/4

p *p*

4/4 4/4

p *p*

16

17

pp *cresc.* *ff* *olim*

Allegro vivace

fff *fff* [*f*] *fff*

fff *ff* *p* *ac - ce - le - ran -*

do *f* *ff* *cresc.*

fff

II

Allegro animato

11

f

1 2

ff

Rachmaninoff — Symphony No. 1

- 7 -

18 10

ppp

19 5

f

sf

20 3 9

Fag. ba

21 ppp

2

ff > f dim.

2

pp

ff > f

22 9

im

sf

pp

23 1

are seen - do

f

ff

ff

ff

ff

8

p

+

ppp

24

5

1

3

25

10

26

ppp

Meno mosso

11

6

f

f

2

27

2

1

sf

Rachmaninoff — Symphony No. 1

- 9 -

5 6

sf Cor. III-IV. *mf* *mf*

3 28 Viole 12 Viole

sf *pp*

29 *ff* *cresc. diminuendo* 12 6 2 Vni soli 2 Vni soli *ff* *cresc.*

Tempo I

cresc. *fff*

dim.

pp

Rachmaninoff — Symphony No. 1

- 40 -

1

mf

1 30 18 Vni I

f

31 5

pp

f

3 32 9 Fag. Bd

ff

33 2 2

ppp

ff *f*

dim *pp* *ff*

34 9

dim.

The musical score on page 11 of Rachmaninoff's Symphony No. 1 consists of ten staves. The notation includes various musical symbols such as notes, rests, beams, and dynamic markings. The key signature is one sharp (F#), and the time signature is 4/4.

Key features of the score include:

- Staff 1:** Starts with a forte (*sf*) dynamic and a crescendo (*cresc.*) marking.
- Staff 2:** Features a piano (*pp*) dynamic and a crescendo (*cresc.*) marking.
- Staff 3:** Includes the lyrics "cre - uen do f" and a fortissimo (*fff*) dynamic.
- Staff 4:** Marked with a fortissimo (*ff*) dynamic and a fortissimo (*fff*) dynamic.
- Staff 5:** Marked with a piano (*p*) dynamic.
- Staff 6:** Marked with a pianissimo (*ppp*) dynamic.
- Staff 7:** Marked with a fortissimo (*f*) dynamic.
- Staff 8:** Marked with a fortissimo (*fff*) dynamic and a fortissimo (*fff*) dynamic.
- Staff 9:** Marked with a pianissimo (*ppp*) dynamic.
- Staff 10:** Marked with a fortissimo (*f*) dynamic.

The score also includes several performance markings, such as slurs, accents, and dynamic changes, which are essential for interpreting the piece.

III

Violin I score, measures 37-41. The score is in 3/4 time and includes various dynamics and tempo markings.

Measure 37: *Larghetto*, *pp*, *mf*, *p*. Measure 38: *mf*, *p*. Measure 39: *Più mosso*, *rit.*, *Ob.*. Measure 40: *a tempo*, *Fl.*, *rit.*, *a tempo*, *p*. Measure 41: *5*, *rit.*, *2*, *a tempo*, *1*, *rit.*, *a tempo*, *1*. Measure 42: *41*, *V-ni I*, *f*, *dim.*, *rit.*.

Largo un poco
Con sord.

pp *cresc.* *ff* *dim.*

pp *cresc.* *ff* *dim.*

pp *cresc.* *ff* *dim.*

42 *pp* *p*

Con moto

ff *pp*

p

Tempo I

3 *pp*

8 *2 V-ni Soli* *mf*

43 *tutti* *Con sord.* *mf*

senza sord.

pp cresc.

dim pp

rit 44 a tempo 6

p f p

p

dim.

45 13 rit. 4

pp

IV

Allegro con fuoco

ff ff 1

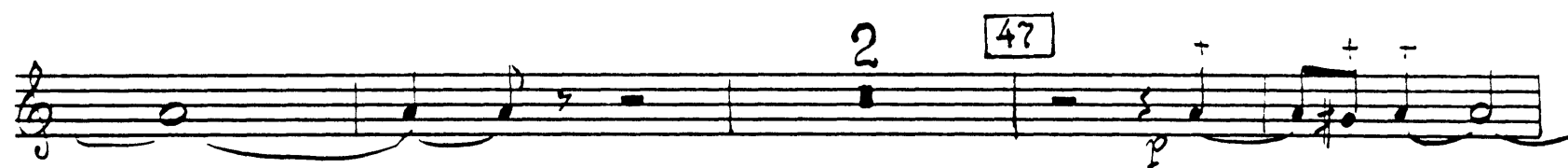
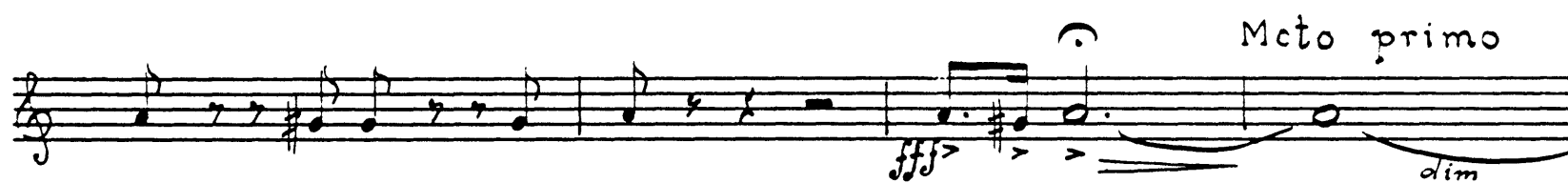
ff 2 1

fff

Marciale (sempre marcato)

Rachmaninoff — Symphony No. 1

5 -



p *cresc.*

ritardando 1

Con anima *mf*

5 48 *mf*

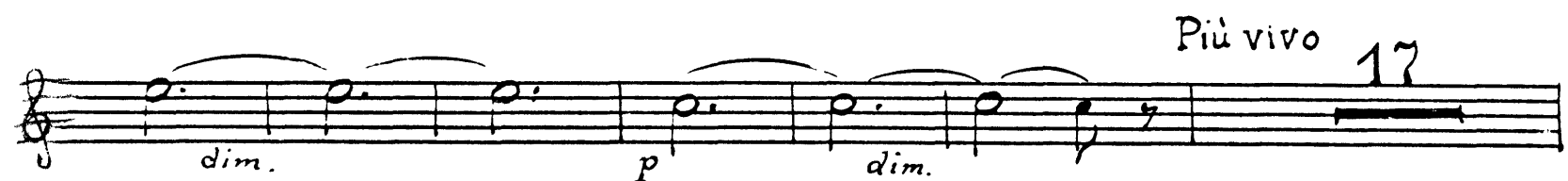
5 49 *f* *ff*

acceler. *mf*

Più vivo *dim.* *p* *mf*

ff

fff



52 *Oz V. m. I*

mf *cresc.*

mf *dim* *mf*

cresc. *f* *dim.* *mf*

Con moto

p *fff*

mf *f* *dim.*

mf *f* *dim.*

53

pp *mp* *cresc.*

Meno mosso. Commodo

ff *p*

54

f *p*

mf

mf

1 4 9

pp

Allegro con fuoco

pp

acceler. 4 7

Cor. III-IV.

sf

sf

sf

sf

mf

55 scherzando

1

1

56

f

sff

f

6

sf

sff

sff

ff marcato

Con moto

?

Musical score for Rachmaninoff's Symphony No. 1, page 20. The score consists of ten staves of music. The first staff begins with a piano (*p*) dynamic and a crescendo (*cresc.*) marking. The second staff includes a ritardando (*rit.*) and a return to tempo (*a tempo*) marking. The third staff has a diminuendo (*dim.*) marking. The fourth staff starts with a box containing the number 57, followed by a fortissimo (*ff*) dynamic and a piano (*p*) dynamic with a crescendo (*cresc.*) marking. The fifth staff begins with a fortissimo (*fff*) dynamic. The sixth staff has a box containing the number 58, followed by a piano (*p*) dynamic and a mezzo-forte (*mf*) dynamic. The seventh staff continues the musical line. The eighth staff includes a *Con moto* tempo marking and a *Presto* tempo marking. The ninth staff starts with a fortissimo (*ff*) dynamic and a fortississimo (*sff*) dynamic. The tenth staff has a box containing the number 59, followed by a fortissimo (*ff*) dynamic and a fortississimo (*sff*) dynamic. The score is written in G major and 4/4 time, featuring various musical notations such as notes, rests, and dynamic markings.

1

60

3

3

Largo Con sord

ff

1 senza sord ritard. Grave

fff cresc.

3

ff

Con moto

4

fff

fff